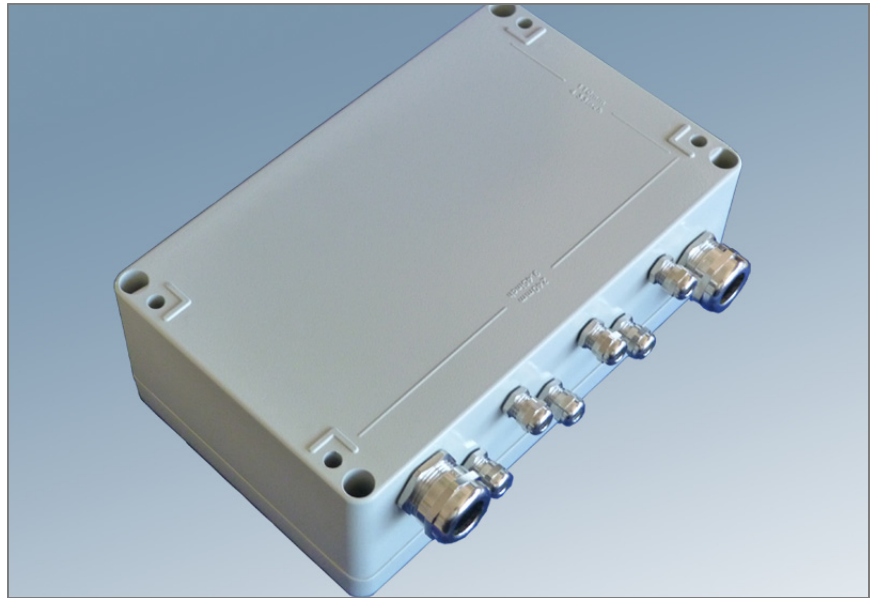




## Terminal housing AC-2124



C104796.002 / V01

### Use

#### NOTE



This manual is a part of the product. Read the manual carefully before using the product.

The AC-2124 is a terminal housing. With it, a number of types of installation can be realised.

### Scope of Supply

No mounting screws are included in the scope of supply.

Fittings:

- 6x M12 x 1,5 with brass plugs
- 2x M25 x 1,5 with brass plugs

Accessories pack:

- 6x EMC fitting with O-ring
- 2x EMC fitting with O-ring

© AC-2124 EN 5.11.12



## Technical Data

Dimensions (W x L x H):	160 mm x 260 mm x 91 mm
Weight:	2.25 kg
Material:	Aluminium
Outside paint:	RAL 7032
Seal:	HF Neusil
Rail:	TS 35
Working temperature:	- 30 °C to + 100 °C
Protection class:	IP 66 according to EN 60529
Cable fittings:	6x M12 x 1,5 mm
Clamping range:	3 - 6.5 mm
Cable fittings:	2x M25 x 1,5 mm
Clamping range:	13 - 18 mm

## Dimensioning

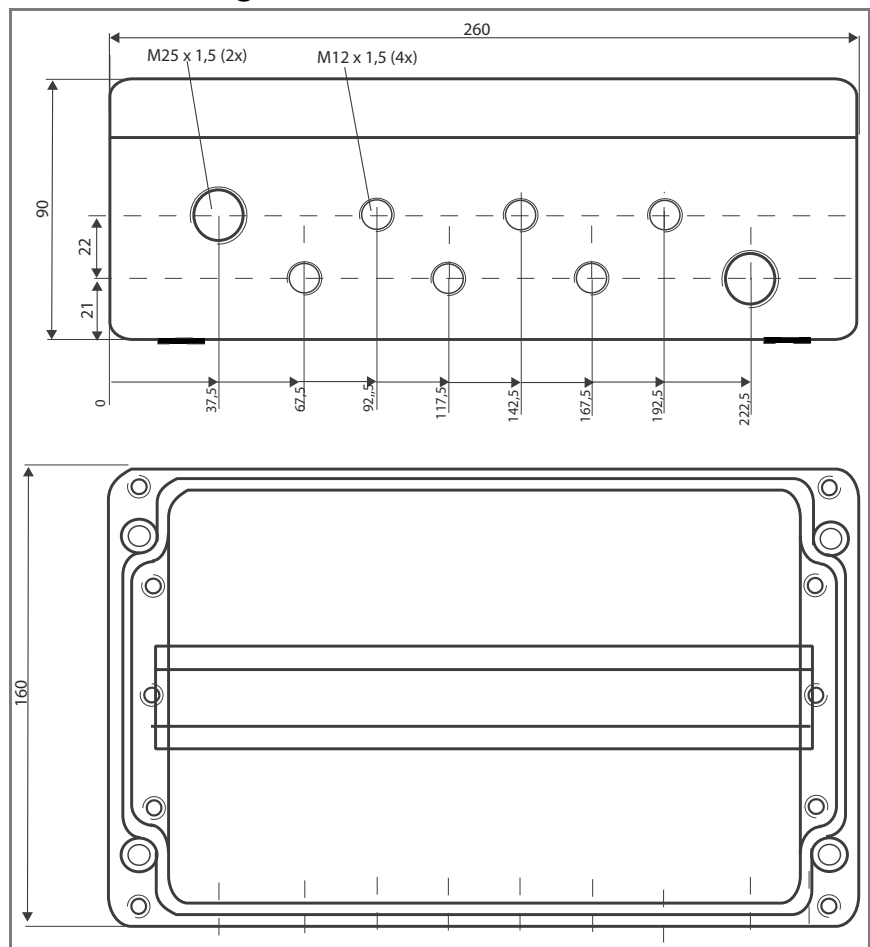


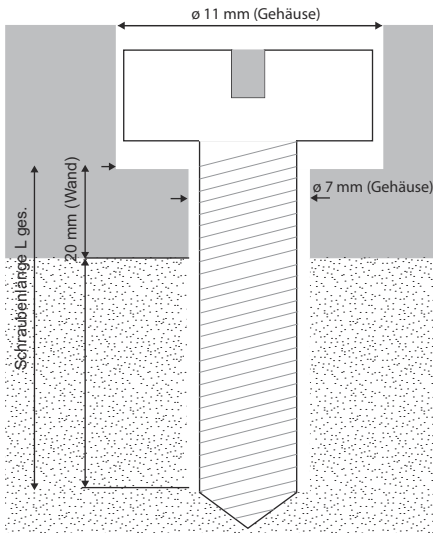
Figure 1) Dimensions of the AC-2124 terminal housing



## Assembly



C104796.002 / V01



### Requirements

- ⇒ Secure the terminal box to non-vibrating machine parts.
- ⇒ Observe the temperature (radiative heating) at the installation site.
- ⇒ For mounting you need a free surface of at least 260 mm x 160 mm.

### Mounting the housing

The correct spacing of the drill holes is drawn on the back of the terminal box.

1. First, mark the positions for the drill holes.
2. Drill the four mounting holes.
3. Remove the housing cover.
4. Secure the housing: Screw in all 4 installation screws (Ø screw head < 10.5 mm).
5. Connect sensors.

#### NOTE



The cable fittings may limit the operating temperature. Take this into account for your installation.

#### NOTE

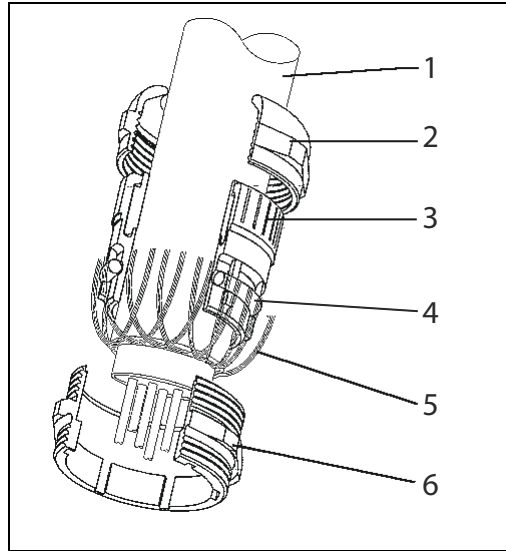


Unused cable fittings may not be left open, as otherwise the IP protection is not ensured.

- ⇒ Ensure that the seals and seal surfaces are not soiled.
- 7. Close the unused cable fittings with the included plugs.
- 8. Put the housing cover back on: Screw on the cover with the 4 mounting screws.

© AC-2124 EN 5.11.12





1. Cable
2. Cap nut
3. Clamping piece
4. Inner O-ring
5. Cable shield
6. Connector

Figure 2) *Layout of the cable shield in the cable fitting*

